

## Form A ID Standard

RL.05.01 Quote accurately from a text when explaining what the text says explicitly and when drawing inferences from the text.

RL.05.03 Compare and contrast two or more characters, settings, or events in a story or drama, drawing on specific details in the text.

RL.05.04 Determine the meaning of words and phrases as they are used in a text, including figurative language such as metaphors and similes.

RL.05.06 Describe how a narrator's or speaker's point of view influences how events are described.

RL.05.07 Analyze how visual and multimedia elements contribute to the meaning, tone, or beauty of a text.

RI.05.01 Quote accurately from a text when explaining what the text says explicitly and when drawing inferences from the text.

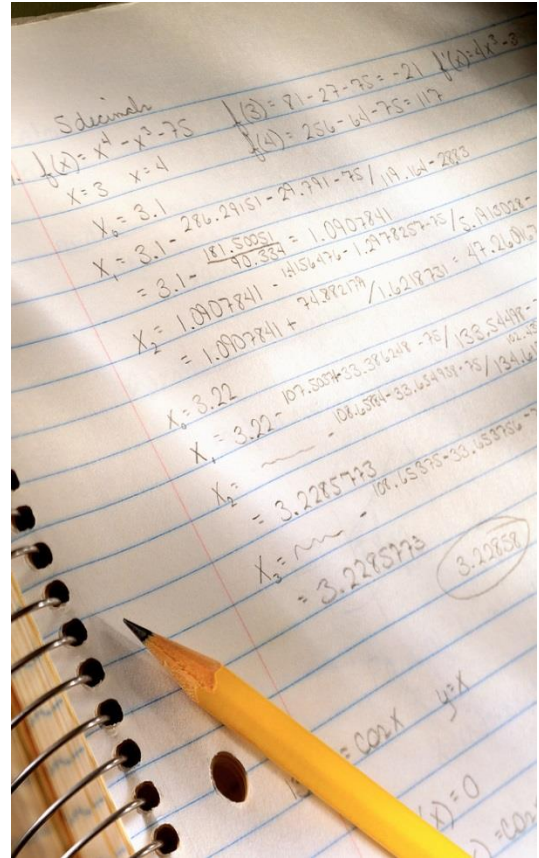
RI.05.02 Determine two or more main ideas of a text and explain how they are supported by key details; summarize the text.

RI.05.04 Determine the meaning of general academic and domain-specific words and phrases in a text relevant to a grade 5 topic or subject area.

RI.05.07 Draw on information from multiple print or digital sources, demonstrating the ability to locate an answer to a question quickly or to solve a problem efficiently.

RI.05.08 Explain how an author uses reasons and evidence to support particular points in a text, identifying which reasons and evidence support which point(s).

RI.05.09 Integrate information from several texts on the same topic in order to write or speak about the subject knowledgeably.



## Form B ID Standards

RL.05.01 Quote accurately from a text when explaining what the text says explicitly and when drawing inferences from the text.

RL.05.02 Determine a theme of a story, drama, or poem from details in the text, including how characters in a story or drama respond to challenges or how the speaker in a poem reflects upon a topic; summarize a text.

RL.05.04 Determine the meaning of words and phrases as they are used in a text, including figurative language such as metaphors and similes.

RL.05.05 Explain how a series of chapters, scenes, or stanzas fits together to provide the overall structure of a particular story, drama, or poem.

RL.05.06 Describe how a narrator's or speaker's point of view influences how events are described.

RL.05.07 Analyze how visual and multimedia elements contribute to the meaning, tone, or beauty of a text. RL.05.09 Compare and contrast stories in the same genre on their approaches to similar themes and topics.

RI.05.01 Quote accurately from a text when explaining what the text says explicitly and when drawing inferences from the text.

RI.05.03 Explain the relationships or interactions between two or more individuals, events, ideas, or concepts in a historical, scientific, or technical text based on specific information in the text.

RI.05.04 Determine the meaning of general academic and domain-specific words and phrases in a text relevant to a grade 5 topic or subject area.

RI.05.05 Compare and contrast the overall structure of events, ideas, concepts, or information in two or more texts.

RI.05.07 Draw on information from multiple print or digital sources, demonstrating the ability to locate an answer to a question quickly or to solve a problem efficiently.

RI.05.08 Explain how an author uses reasons and evidence to support particular points in a text, identifying which reasons and evidence support which point(s).



## Form C ID Standard

RL.05.01 Quote accurately from a text when explaining what the text says explicitly and when drawing inferences from the text.

RL.05.02 Determine a theme of a story, drama, or poem from details in the text, including how characters in a story or drama respond to challenges or how the speaker in a poem reflects upon a topic; summarize the text.

RL.05.03 Compare and contrast two or more characters, settings, or events in a story or drama, drawing on specific details in the text.

RL.05.04 Determine the meaning of words and phrases as they are used in a text, including figurative language such as metaphors and similes.

RL.05.05 Explain how a series of chapters, scenes, or stanzas fits together to provide the overall structure of a particular story, drama, or poem.

RL.05.07 Analyze how visual and multimedia elements contribute to the meaning, tone, or beauty of a text.

RI.05.01 Quote accurately from a text when explaining what the text says explicitly and when drawing inferences from the text.

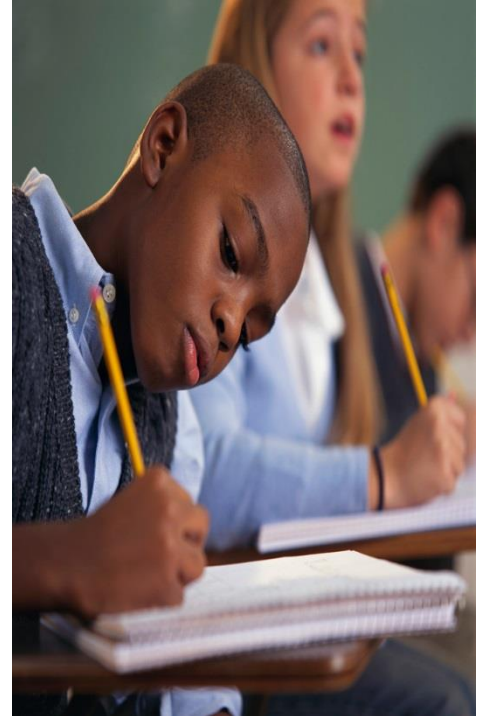
RI.05.03 Explain the relationships or interactions between two or more individuals, events, ideas, or concepts in a historical, scientific, or technical text based on specific information in the text.

RI.05.04 Determine the meaning of general academic and domain-specific words and phrases in a text relevant to a grade 5 topic or subject area.

RI.05.06 Compare and contrast the overall structure of events, ideas, concepts, or information in two or more texts.

RI.05.07 Draw on information from multiple print or digital sources, demonstrating the ability to locate an answer to a question quickly or to solve a problem efficiently.

RI.05.08 Explain how an author uses reasons and evidence to support particular points in a text, identifying which reasons and evidence support which point(s).



## Form D ID Standard

RL.05.01 Quote accurately from a text when explaining what the text says explicitly and when drawing inferences from the text.

RL.05.02 Determine a theme of a story, drama, or poem from details in the text, including how characters in a story or drama respond to challenges or how the speaker in a poem reflects upon a topic; summarize the text.

RL.05.03 Compare and contrast two or more characters, settings, or events in a story or drama, drawing on specific details in the text.

RL.05.04 Determine the meaning of words and phrases as they are used in a text, including figurative language such as metaphors and similes.

RL.05.05 Explain how a series of chapters, scenes, or stanzas fits together to provide the overall structure of a particular story, drama, or poem.

RL.05.06 Describe how a narrator's or speaker's point of view influences how events are described.

RL.05.07 Analyze how visual and multimedia elements contribute to the meaning, tone, or beauty of a text.

RI.05.01 Quote accurately from a text when explaining what the text says explicitly and when drawing inferences from the text.

RI.05.03 Explain the relationships or interactions between two or more individuals, events, ideas, or concepts in a historical, scientific, or technical text based on specific information in the text.

RI.05.04 Determine the meaning of general academic and domain-specific words and phrases in a text relevant to a grade 5 topic or subject area.

RI.05.07 Draw on information from multiple print or digital sources, demonstrating the ability to locate an answer to a question quickly or to solve a problem efficiently.

RI.05.08 Explain how an author uses reasons and evidence to support particular points in a text, identifying which reasons and evidence support which point(s).

RI.05.09 Integrate information from several texts on the same topic in order to write or speak about the subject knowledgeably.

